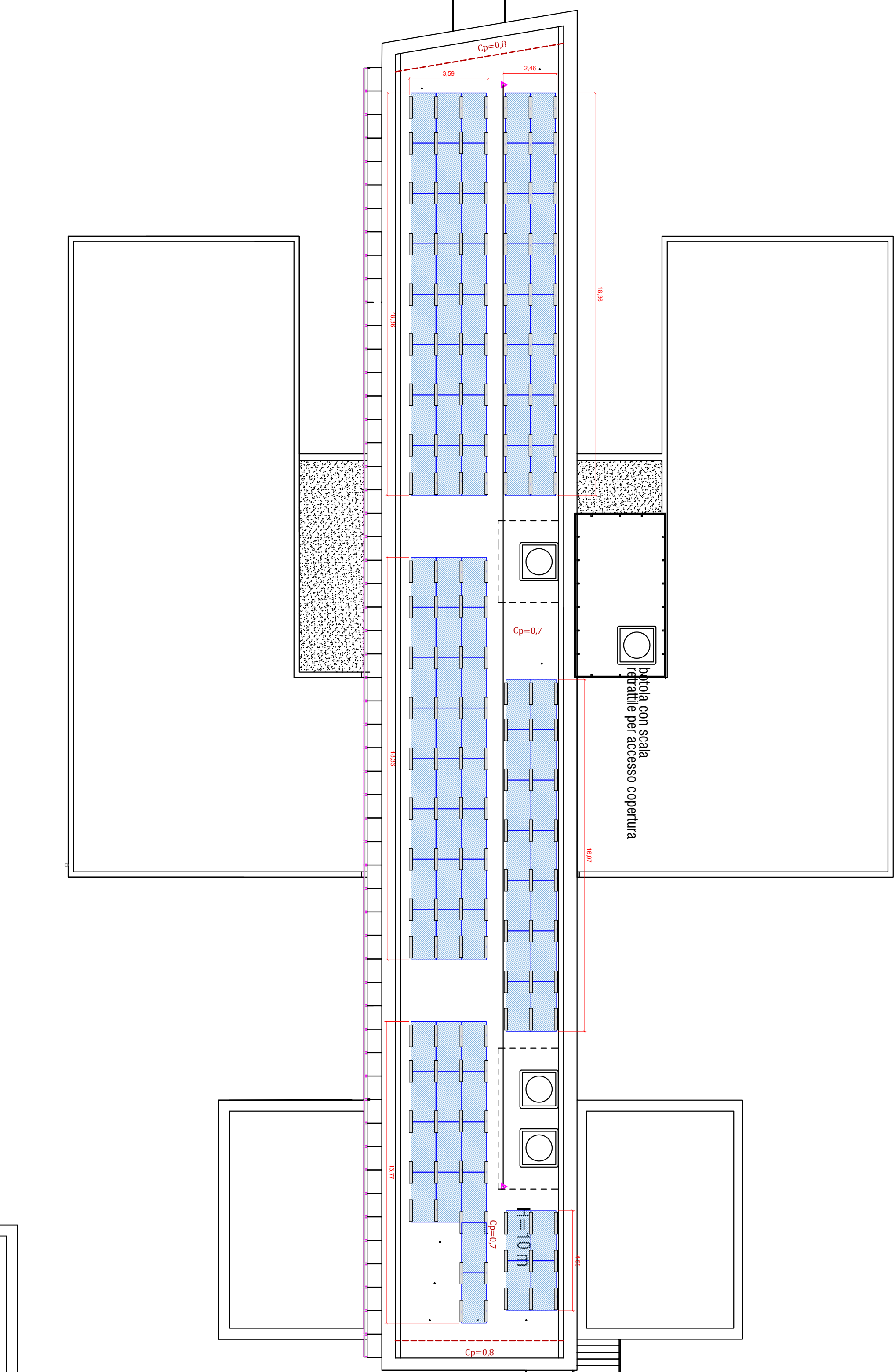


Architectural floor plan of a building. The plan shows a central corridor (6.00m) and a large room on the left (15.00m). The plan also shows a central staircase area, a central corridor, and a central staircase area. The plan is labeled with 'Gp=0.7' and 'Gp=1.5'.

	Vento da normativa in km/h	Vento di calcolo effettivo in km/h
ZONA F		
ZONA G		
ZONA H	116,66	175,61

	Vento da normativa in km/h	Vento di calcolo effettivo in km/h
ZONA F		
ZONA G		
ZONA H	116,66	175,61



Technical drawing of a door. The door is rectangular with a diagonal red hatching pattern. It features three circular handles or locks arranged vertically on the right side. A vertical line is drawn on the left side, possibly indicating a hinge or a frame edge.